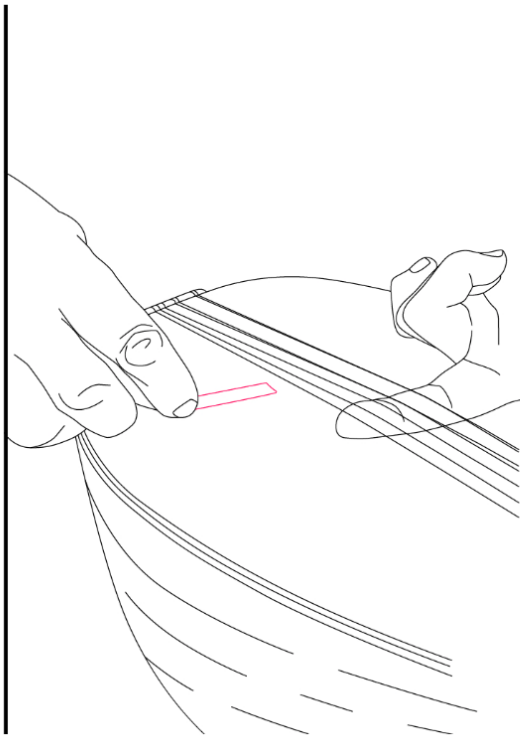
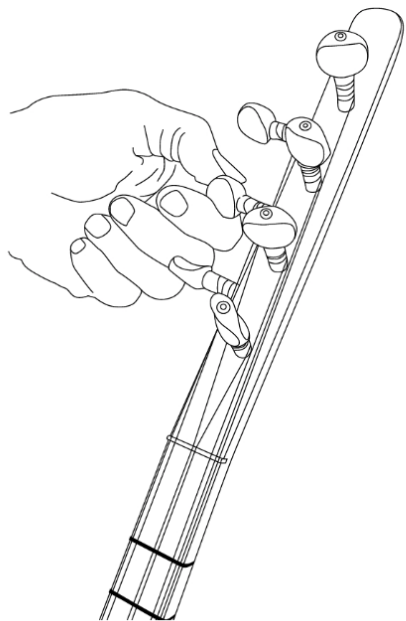




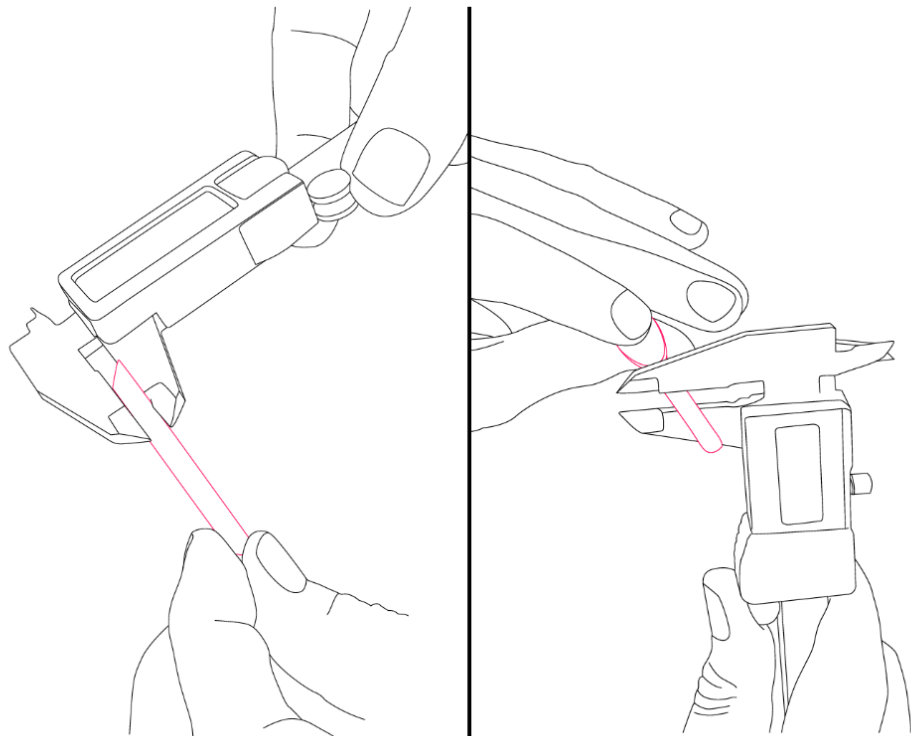
KNA PICKUPS

BG-1 & BG-2 BAGLAMA PICKUPS
INSTALLATION GUIDE



Loosen the strings of your baglama.

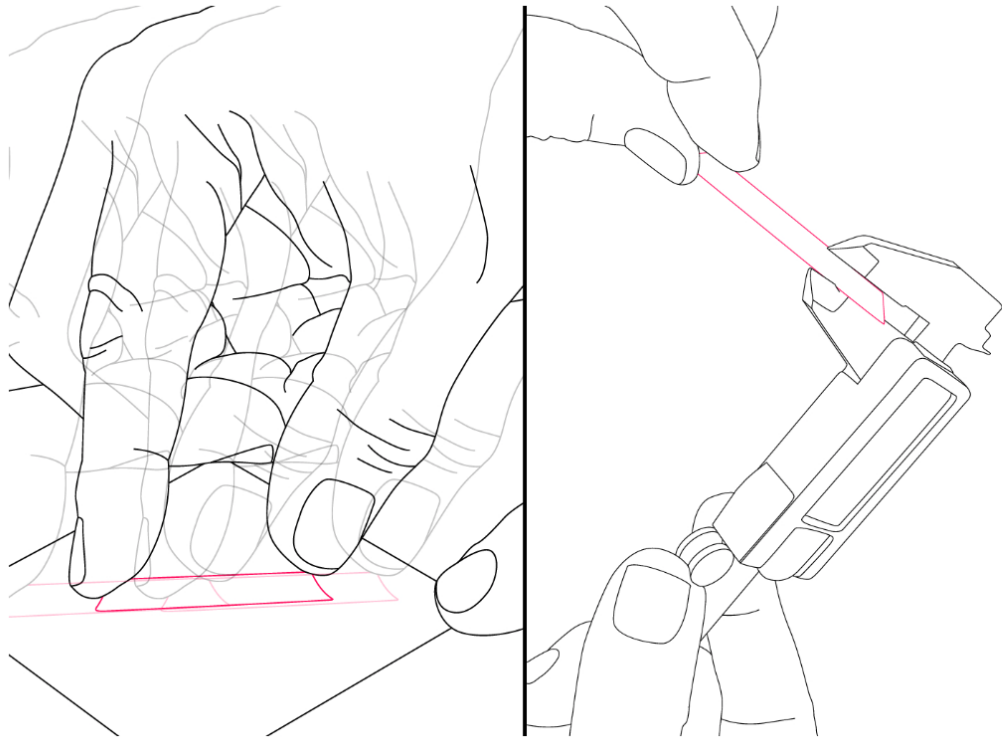
Lift the strings and carefully remove the current saddle by sliding it aside.



Using a caliper, measure the height of your saddle you have just removed.

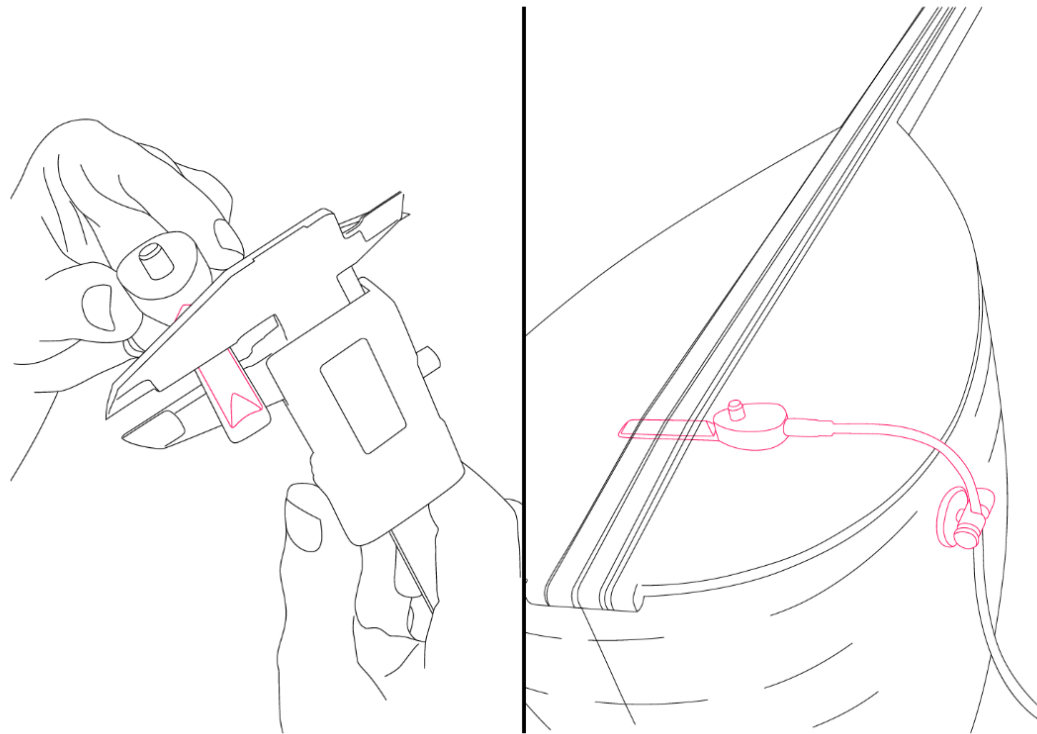
Measure and compare the height of the two provided saddles while positioned on top of the pickup.

- Choose the one with the exact or slightly taller height.



If necessary, use a 240 to 400 sand paper grit to lower the height of the ebony saddle.

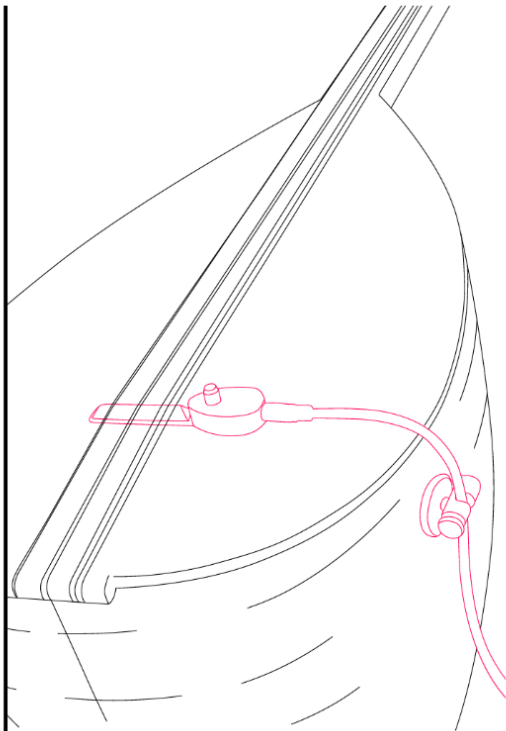
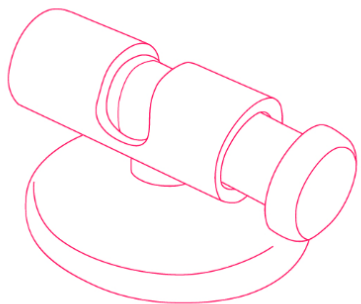
- Make sure to place the sand paper on at surface.
- Always sand the ebony saddle from the bottom flat side only.
- Frequently check the height to avoid making the saddle shorter.
- Only sand the ebony saddle and not the pickup.



Once the proper height is achieved, use the provided double sided adhesive strip to attach the ebony saddle on top of the pickup.

- Please consider the thickness of the adhesive strip is only 0.05mm.

Once your pickup is installed, use the original saddle as reference and position the strings exactly the same way.



Choose the most convenient place to attach the provided KNA safety cable clip.

- The clip can be attached with the provided adhesive disc or magnet if the instrument allows it.

Retune the instrument.

Enjoy your new KNA pickup!