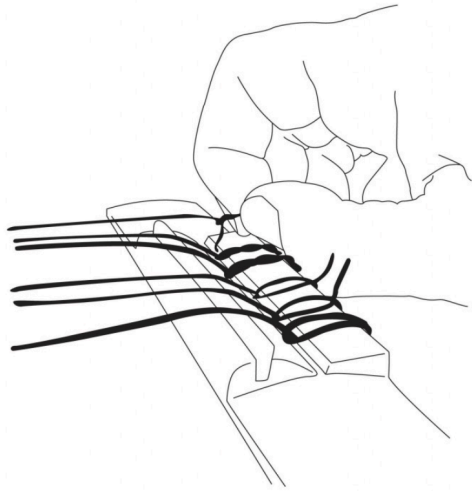
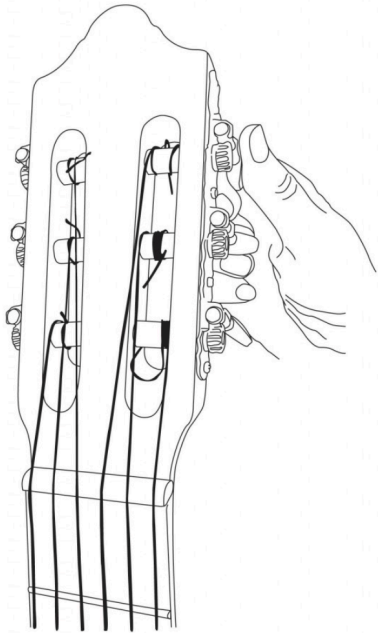


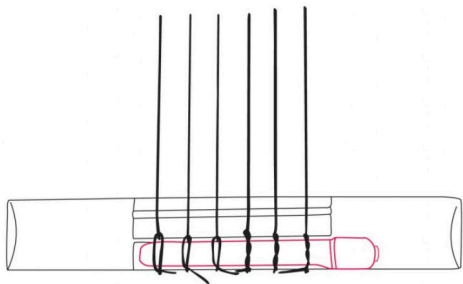
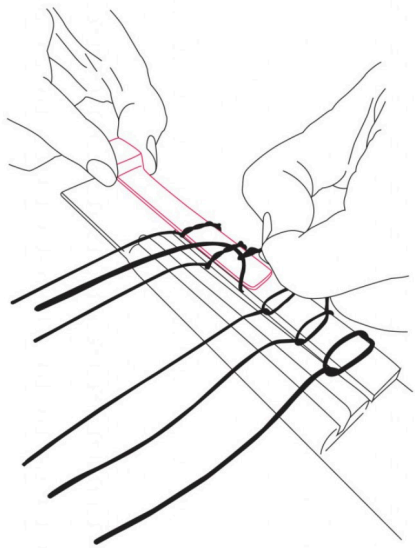


KNA PICKUPS

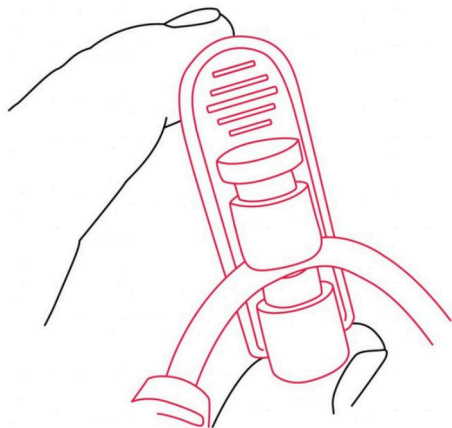
**NG-27S NYLON 7-STRING
GUITAR PICKUP
INSTALLATION GUIDE**



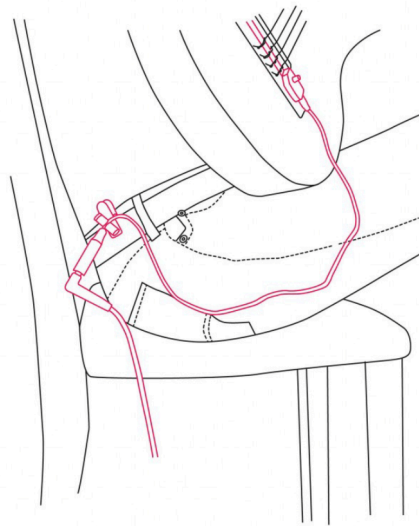
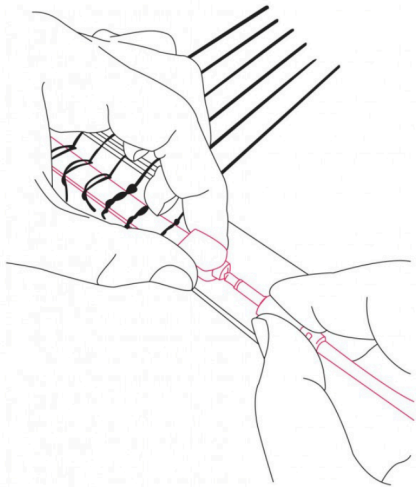
Loosen the strings of your guitar. Make sure there is enough space under the loops so the pickup can slide through without any pressure.



Slide the pickup under the string loops. Keep it positioned evenly on the tie bar while tightening the strings and retune.



Press the top button to open the safety clip. Insert your instrument cable into the opening and release the button.



Hold the pickup head securely when attaching and detaching the cable.

Attach the clip to a suitable part of your instrument strap, belt or belt loop. The jumper cable and safety clip will protect your pickup from accidental damage caused by the cable pulling on the head of the pickup.

You are ready to enjoy your new pickup!